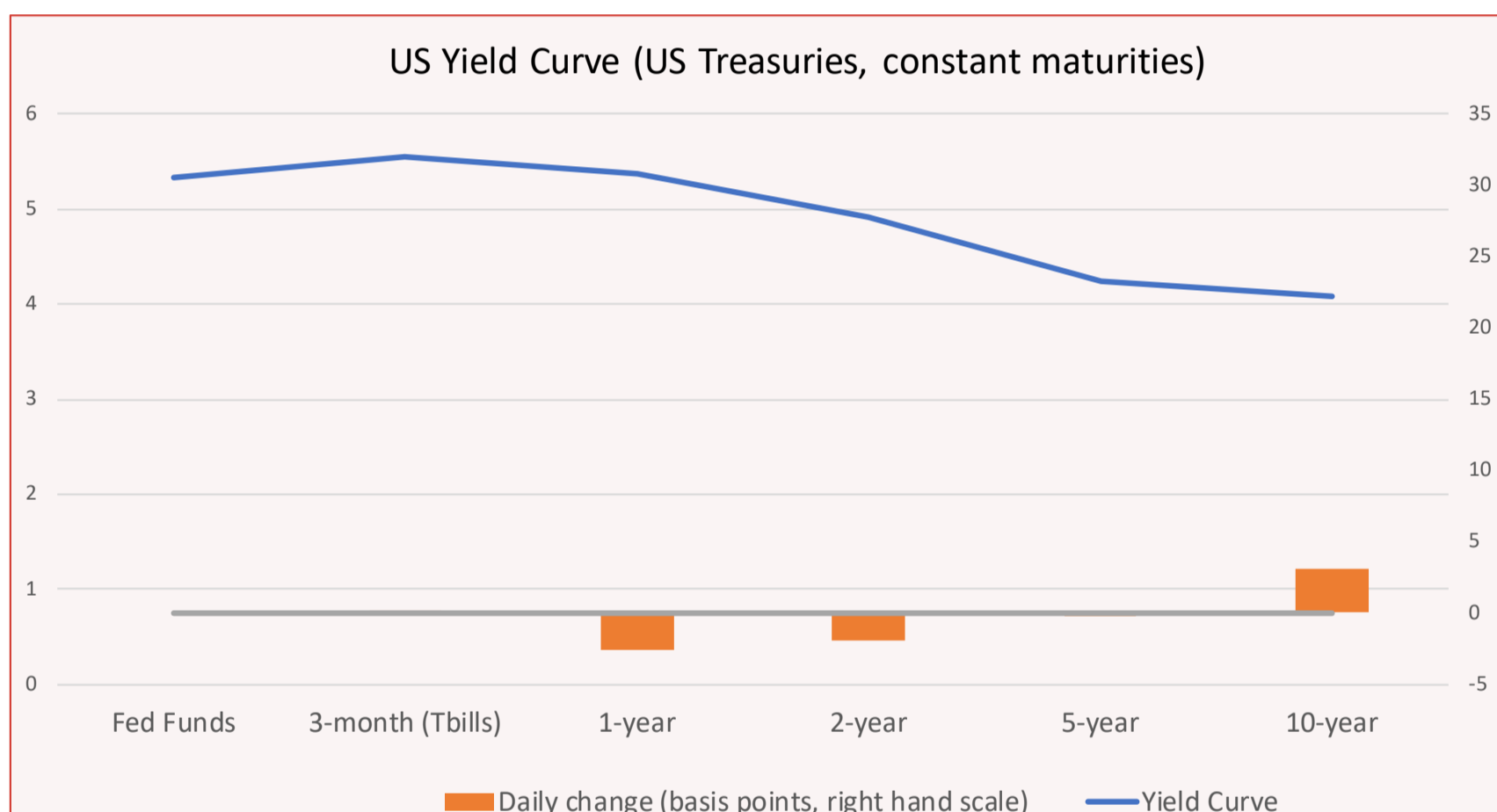


RISK PREMIUM INVEST

Daily analysis of the US Treasuries Market

2 August 2023

	Fed Funds	3-month (Tbills)	1-year	2-year	5-year	10-year
Rates	5,33	5,54	5,36	4,91	4,24	4,08
Daily changes (bp)	0	0	-3	-2	0	3



Source: Federal Reserve, H15. (with small tweaks to smooth out the impact of benchmarks changes).

Highlights:

- US Treasuries yields were little changed on Wednesday, with rates moving in different directions at the short and long end of the curve.
- Overall, it was a "risk-off" day with movements difficult to interpret, as Fitch's downgrade of the US government's credit rating served as the catalyst for the correction in risky assets.

US government

PART I : Changes in expected Fed Funds.

PART II : Risk premia contributions.

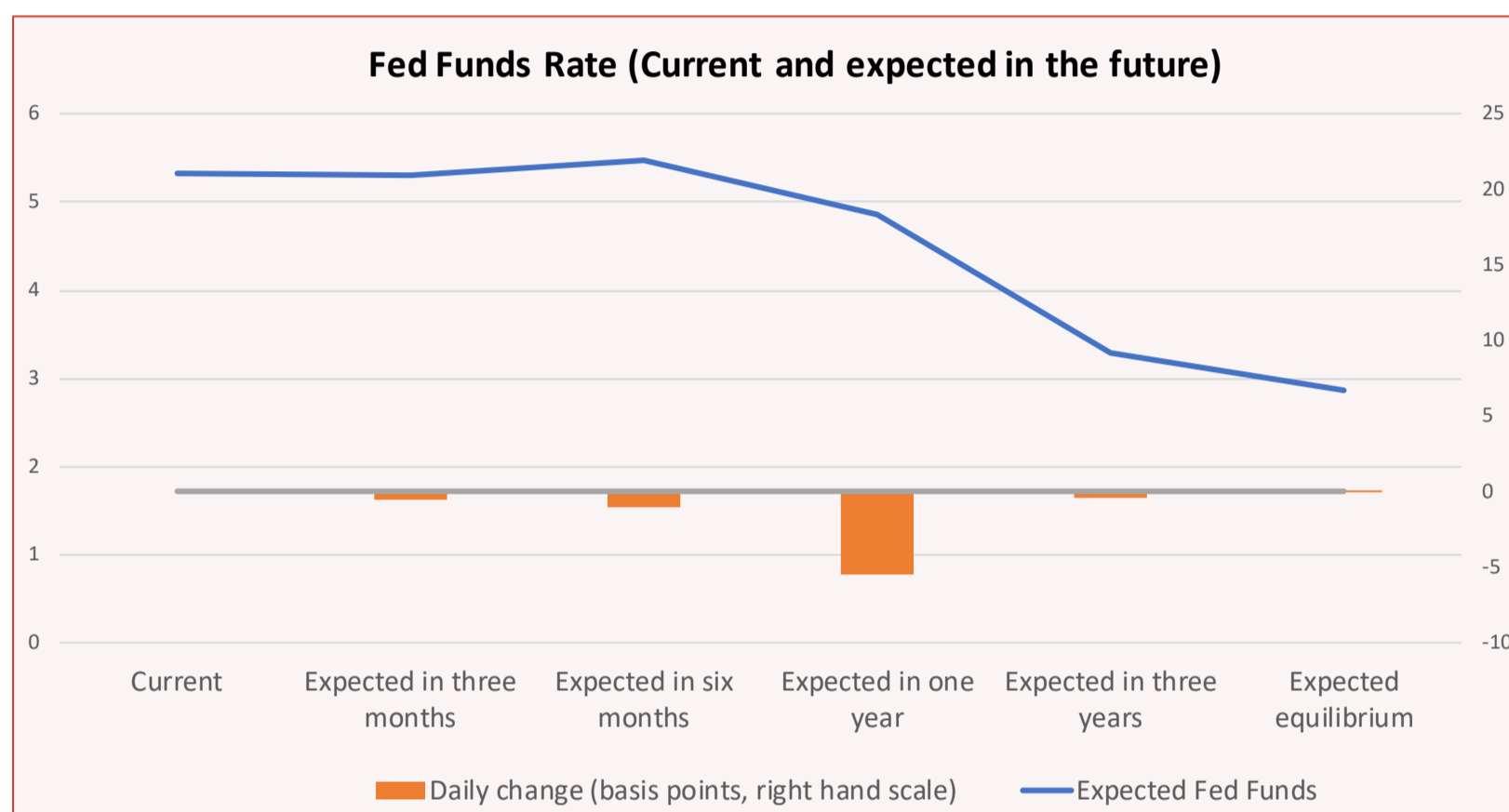
PART III : Methodological annex.

PART I : CHANGES IN EXPECTED FED FUNDS

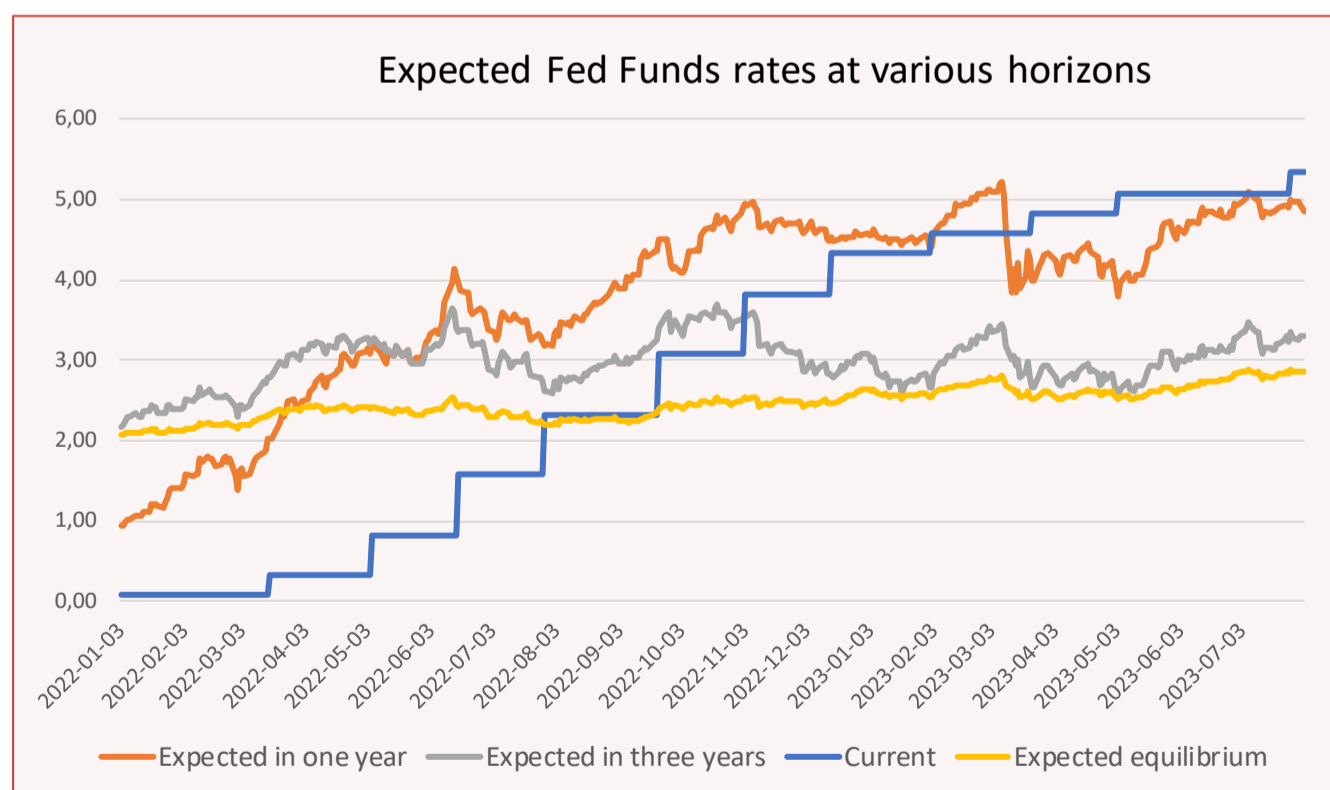
Fed funds futures provide a biased estimate of investors' true expectations, as they are influenced by varying risk premia. The Fed Funds rates expected by investors are here estimated by our proprietary model using both different surveys (the monthly "Consensus Economics" survey and the quarterly "Survey of Professional Forecasters") and the rich information contained in the yield curve (see the methodological annex). Estimates are revised when more recent surveys become available (on July 18, the July "Consensus Forecast" was introduced).

On Wednesday, ADP's estimate of stronger than expected job creations in July had only a temporary impact on Fed funds rates expectations. ADP's estimates are not considered as a reliable guide of official jobs data released a few days later. Investors' attention was more focused on the consequences of Fitch's downgrade of the U.S. government's credit rating. This was not a major event, but as it contributed to a correction in the US equity market it is marginally playing in favor of a slowing of the US economy. At the end of the day, expectations for future Fed funds rates at the one-year horizon were slightly lower.

	Current	Expected in three months	Expected in six months	Expected in one year	Expected in three years	Expected equilibrium
Fed Funds	5,33	5,30	5,48	4,86	3,30	2,87
Daily changes (bp)	0	-1	-1	-5	0	0



At 5.48% in six months and 4.86% in one year, expectations for future Fed funds rates are still close to the Fed's most recent forward guidance. Investors give a relatively high probability to one final rate hike before the end of the year as in the Fed's "dot plots". These expectations are likely to remain quite volatile over the coming months as new information is released on inflation and the strength of the economy. An interesting point in the material released by the Fed at the end of the last meeting is that FOMC members appear to be at odds over the extent of likely rate cuts in 2024. The median estimate for Fed funds rates at the end of 2024 is 4.6%, but there is a wide range of opinions between 3.6% and 5.9%.



Main market-moving news: 2 August 2023

US Macroeconomics

ADP national employment for July at 324,000 (Expected 189,000; Prior 497,000 revised at 455,000).

Others

Late on Tuesday, Fitch unexpectedly downgraded the U.S. government's credit rating, by one notch to AA+ from AAA.

The Treasury Department's announced offering of \$103 billion in Treasuries to refund roughly \$84 billion coming due on Aug. 15.

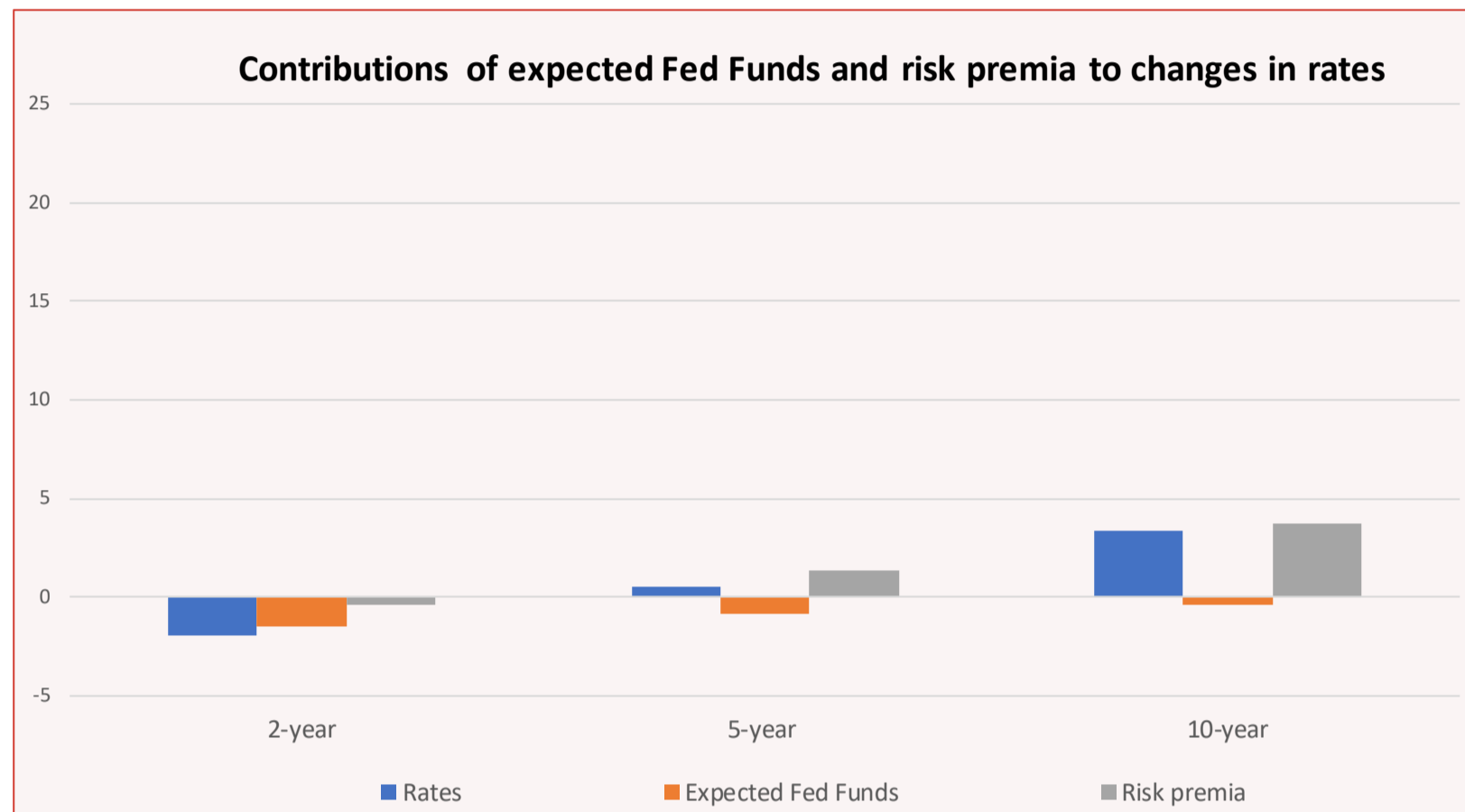
PART II : RISK PREMIA ANALYSIS

For US Treasuries, as for all financial assets, there are two key different types of risk premia:

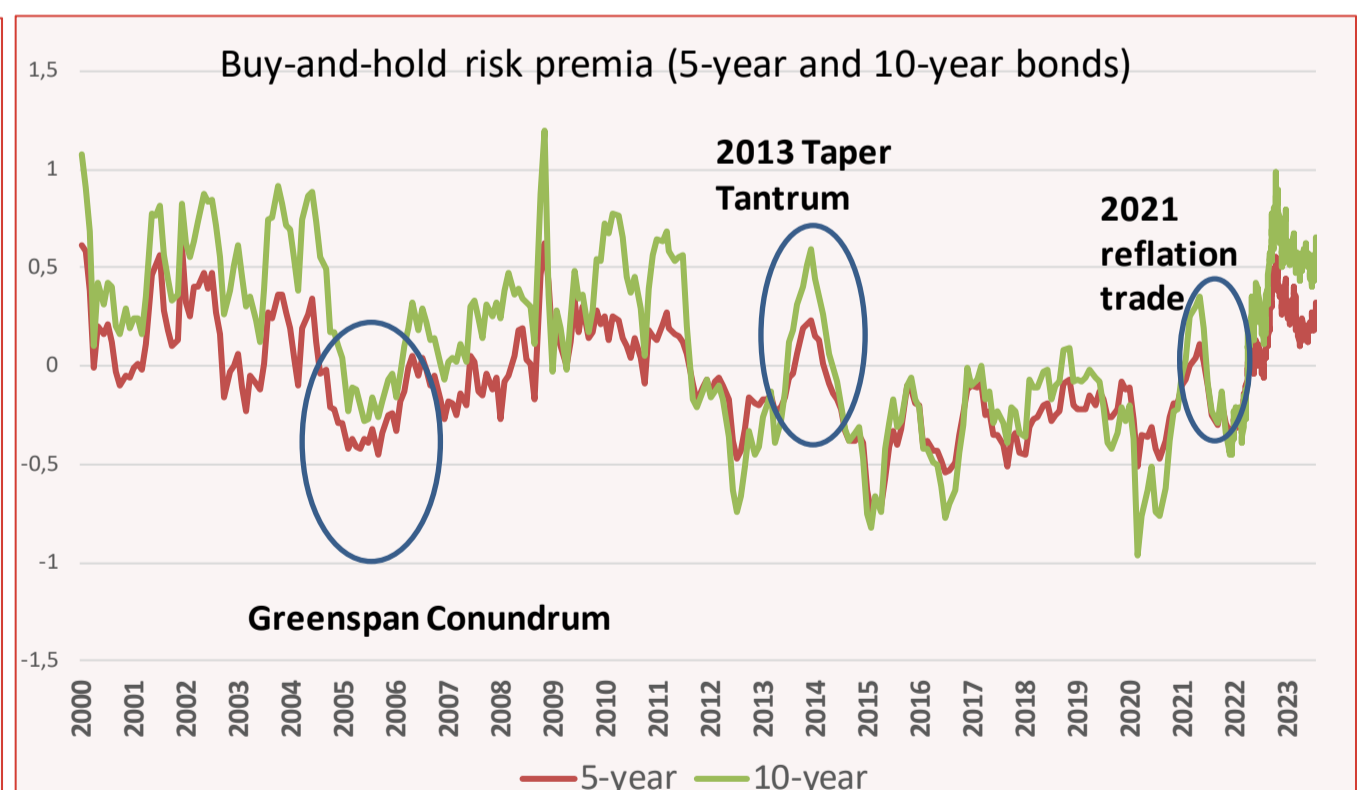
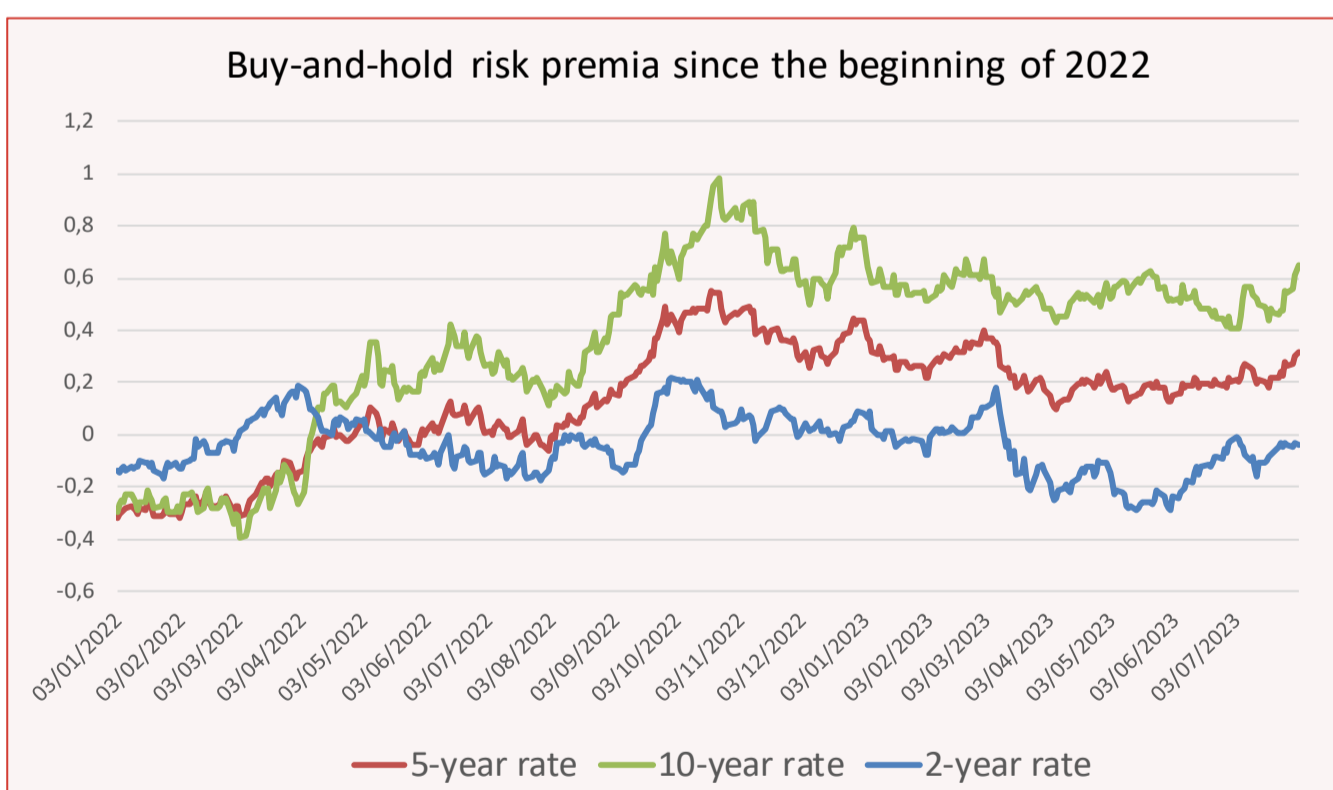
- The short-term **tactical risk premia**: How much excess returns investors require to hold various risky assets at their tactical horizon (which depends on investors, but is often around 3 months)? The tactical positions taken by investors relative to their benchmarks (“neutral”, “short”, “long”) depend on these tactical risk premia.
- The **“buy-and-hold” or “embedded” risk premia**. How much excess return **long-term investors** expect if they hold risky assets over an extended horizon? In the case of US Treasuries, the buy-and-hold risk premia are the differences between the zero-coupon rates of various maturities and the (annualized) expected return on a fund invested in Fed Funds over the same period.

We estimate both types of risk premia (see the methodological annex and our excel file) but we discuss here only the buy-and-hold risk premia.

Risk premia on long-term US Treasuries continued to drift higher on Wednesday. Fitch’s downgrade may have played a role, as it pushed generally higher the risk premia on risky assets (the S&P index was down 1.38% on Wednesday). On the other hand, investors may be slightly worried by the confirmation on Wednesday that the Treasury plans to increase significantly its issuance of bills and notes in the coming months.



	2-year	5-year	10-year
Buy-and-hold risk premia	-0,04	0,32	0,65
Daily changes (bp)	0	1	4



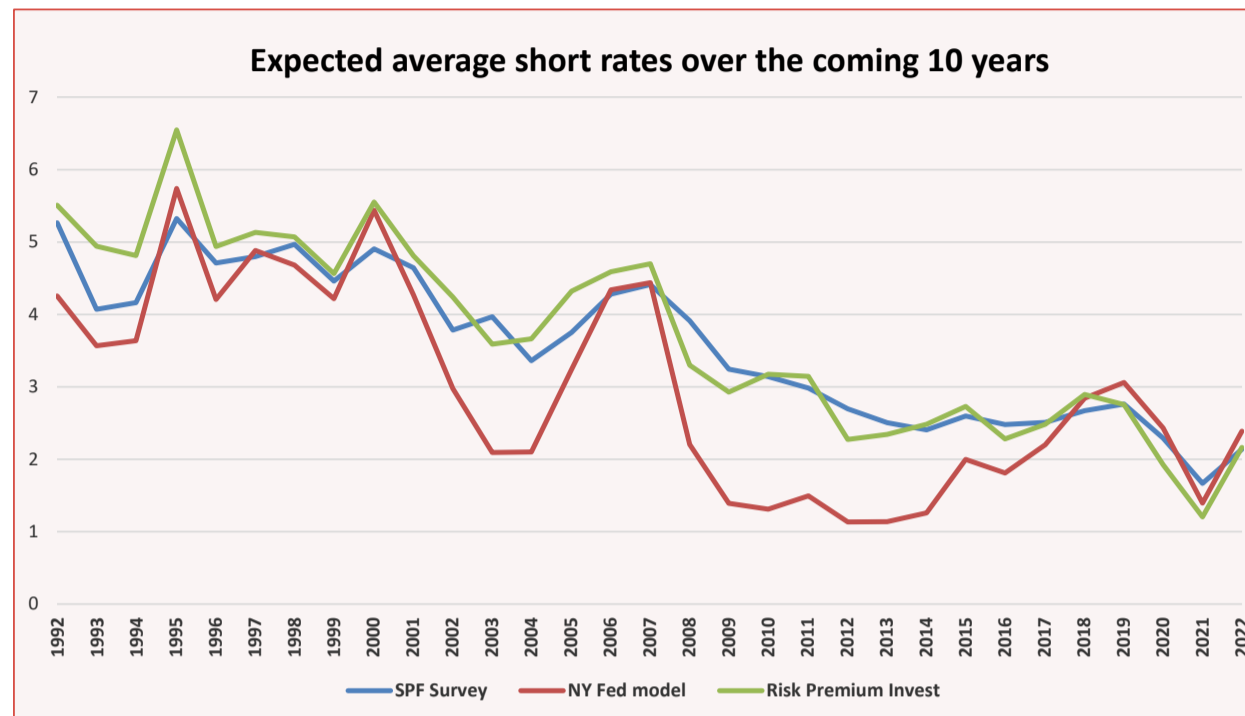
With a long-term perspective, it appears that the buy-and-hold risk premia on long-term Treasuries are relatively high (see the right-hand side graph). This may not come as a surprise with some inflationary risks remaining and often – but not always - a positive correlation between the price of long-term bonds and equities. Yet, since the beginning of Fed’s Quantitative Easing in 2010, there has been only two episodes where the buy-and-hold risk premia on 10-year US Treasuries have been significantly positive: the 2013 “taper tantrum” and the 2021 “reflation trade” episodes where investors introduced large short positions in Treasuries. Both time, these relatively high short positions and positive risk premia proved unsustainable and risk premia came back later on negative territory.

Looking forward, changing buy-and-hold risk premia should introduce a lot of volatility in the US Treasuries markets. On the one hand, there is still an excess demand for long-term Treasuries and, we believe, a tendency for risk premia to go back on negative territory as soon as inflationary risks recede (and negative betas come back!). On the other hand, the market will have in the future to absorb a larger supply with the Fed starting to cut its holding of bonds (“Quantitative Tightening”). This may push many investors to introduce again large short positions in the belief that long-term rates are now on a structural upward trend.

PART III : METHODOLOGICAL ANNEX

There is an abundant academic literature trying to extract from the yield curve the monetary policy path expected by investors and the risk premia embedded in the observed US Treasuries rates.

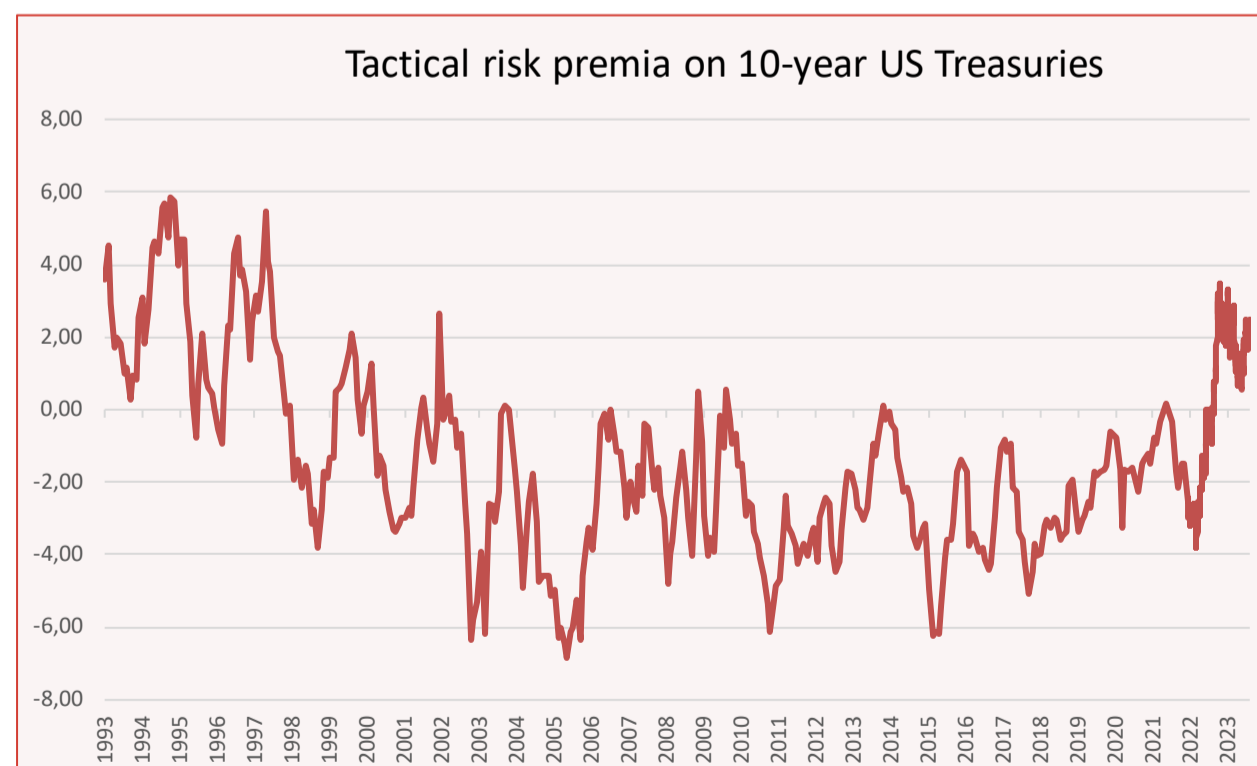
One of the best-known statistical models is the model developed by the Federal Reserve Bank of New-York. Their estimates are published daily on the NY Fed website (see www.newyorkfed.org/research/data_indicators/term-premia-tabs#/overview). Strangely enough, these estimates don't seem to be used by many markets practitioners when they discuss the shape of the yield curve and how it can be explained by short-rates expectations and risk premia. One of the reasons is that the results of the model are often quite unrealistic. To illustrate that observation, we can compare the average short rates expected by investors over the next 10 years according to this model with what professional forecasters expect (answers, once a year in February, to the well-regarded survey managed by the Federal Reserve Bank of Philadelphia. See www.philadelphiafed.org/surveys-and-data/real-time-data-research/survey-of-professional-forecasters).



There are many reasons why the average investor's view priced into the market may differ somewhat from the answer given by professional forecasters, but the difference is often much too large to be realistic.

The truth is that the estimates published on the NY Fed website are rather imprecise. There is indeed a large academic literature stressing that the yield curve alone does not contain enough information to extract the investors' underlying views and that the results of surveys should be incorporated in the extraction process (see Kim, Don H., and Athanasios Orphanides, 2012, Term structure estimation with survey data on interest rate forecasts, *Journal of Financial and Quantitative Analysis* 47).

Our model belongs to this class of models that combine information coming from well-regarded surveys with the observed yield curve. But its key originality is elsewhere. Our model does not extract only the buy-and-hold risk premia, but it also extracts the important short-term tactical risk premia required by investors on bonds of various maturities. These tactical risk premia are very important to understand the shape of the yield curve (see the references at the end of this page). One very important result of our work is that until the recent inflationary fears these tactical risk premia have been on average negative since the end 90s (the following graph represents the annualized excess return expected by investors on 10-year Treasuries at the 3-month horizon).



That means that a long time before the Fed introduced QE there was already an insufficient supply of risk-free Treasuries: tactical positions were on average structurally short in this key market. To keep it simple, this rich information about tactical risk premia is not discussed in this daily comment, but an excel file with the full information is available on our website (see the link on the homepage of www.riskpremium.com)

To know more about our modelling of the yield curve, and the key insights it provides on how markets price risks:

For a short presentation of the indicators we publish and how they can be used to understand the US yield curve, see <https://riskpremium.com/wp-content/uploads/2022/07/RiskPremia-UST-guide-en.pdf>

For a non-academic description of our modelling, see <https://riskpremium.com/wp-content/uploads/2022/06/USTreasuries-Model-Guide.pdf>